



# GAT MONTHLY MEMBERSHIP PROGRESS REPORT

Results as of: 8/31/2021

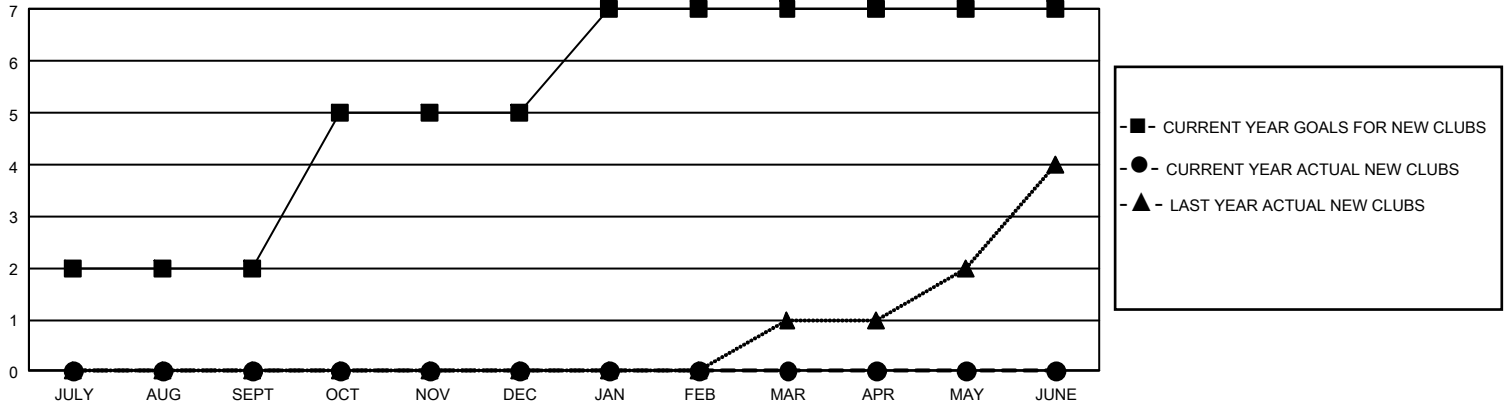
## GMT Constitutional Area 2, Group C

REPORT DOES NOT INCLUDE CLUBS IN UNDISTRICTED AREAS.

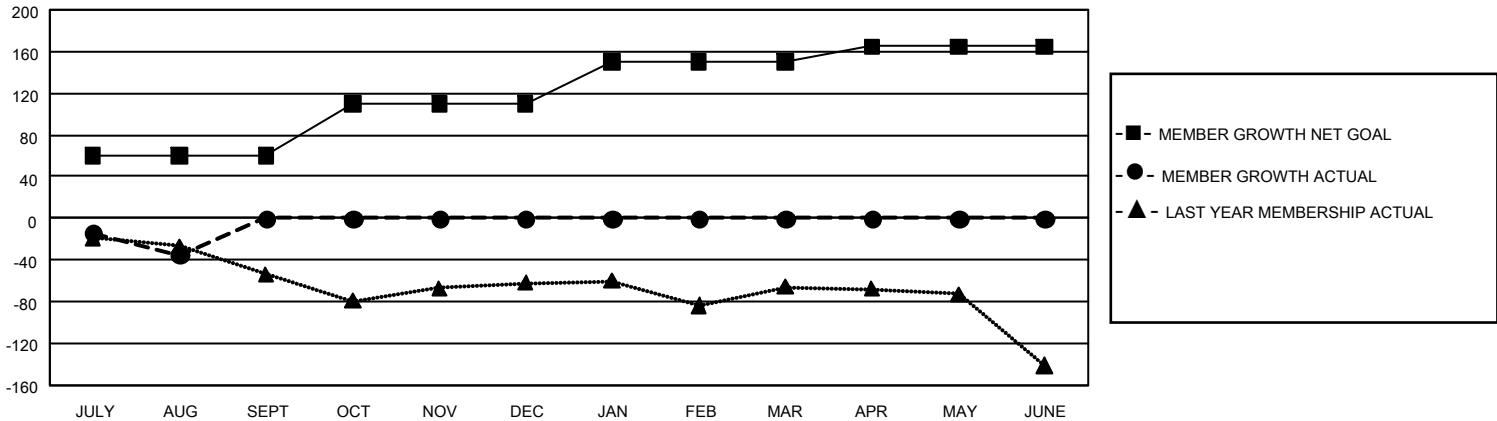
Clubs			
RESULTS FOR 2021-2022			
QUARTER	NEW CLUB GOAL	NEW CLUBS	DROPPED CLUBS
JULY/AUG/SEPT	6	0	1
OCT/NOV/DEC	9	0	0
JAN/FEB/MAR	6	0	0
APR/MAY/JUNE	0	0	0

Members			
RESULTS FOR 2021-2022			
QUARTER	MEMBER GROWTH NET GOAL	MEMBER GROWTH ACTUAL	DROPPED MEMBERS ACTUAL (including transfers)
JULY/AUG/SEPT	60	13	44
OCT/NOV/DEC	50	0	0
JAN/FEB/MAR	40	0	0
APR/MAY/JUNE	15	0	0

GOALS AND ACTUAL NEW CLUBS CUMULATIVE



GOALS AND ACTUAL MEMBERS CUMULATIVE



DROPPED CLUBS: 1	7 CLUBS OF 165 ADDED 1 OR MORE NEW MEMBERS	<u>GENDER DISTRIBUTION</u>
<u>DROPPED MEMBERS</u>	<a href="#">CLICK HERE FOR CUMULATIVE MEMBERSHIP DATA</a>	MALE 2,370 (65.29%)
DECEASED 5		FEMALE 1,260 (34.71%)
CLUB CANCELLED 0		NON BINARY 0 (0.00%)
OTHER 39		PREFER NOT TO ANSWER 0 (0.00%)
<b>TOTAL 44</b>		TOTAL FAMILY UNIT MEMBERS 639
		FAMILY MEMBERS PAYING HALF DUES 327